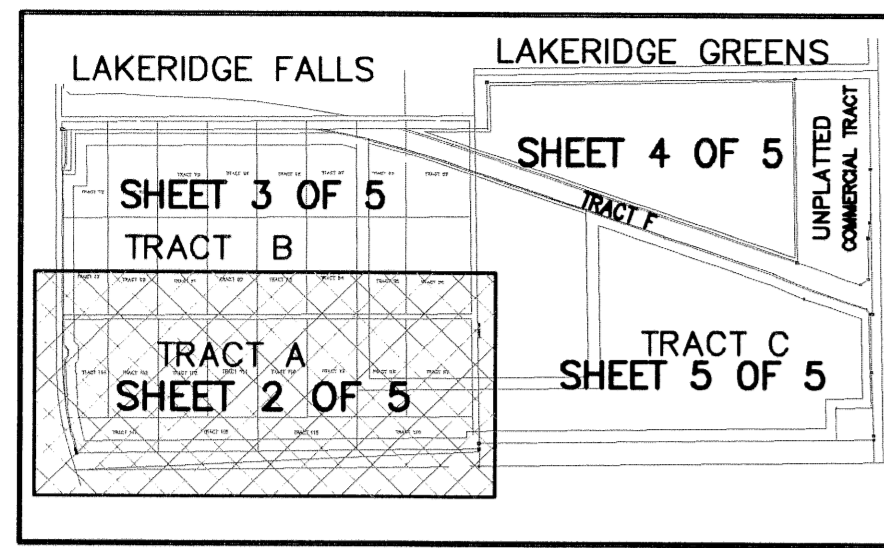


WINSBERG WETLAND RESTORATION PROJECT

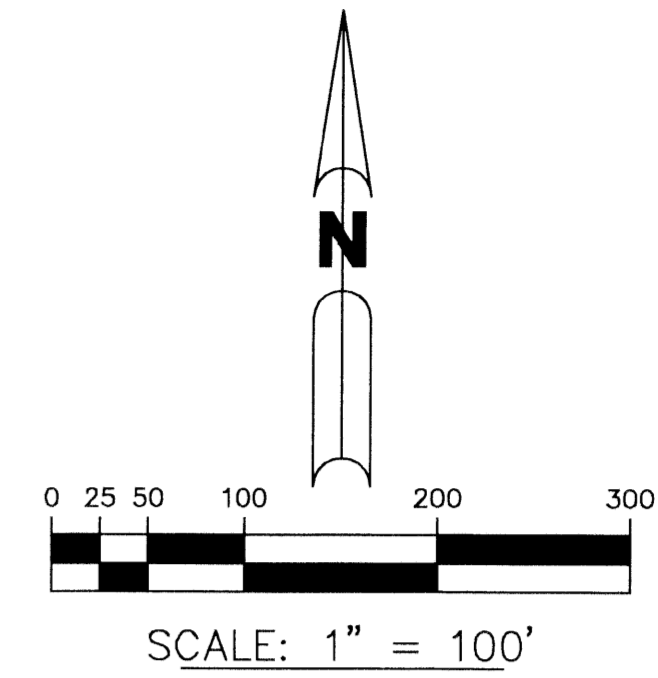
A REPLAT OF A PORTION OF TRACTS 65 THROUGH 72, 89 THROUGH 96, 97 THROUGH 104, AND 117 THROUGH 120, BLOCK 64, IN SECTION 4, TOWNSHIP 46 SOUTH, RANGE 42 EAST, PALM BEACH FARMS COMPANY PLAT No.3, RECORDED IN PLAT BOOK 2, PAGE 45 OF THE PUBLIC RECORDS OF PALM BEACH COUNTY, FLORIDA, AND A PORTION OF THE SOUTHWEST QUARTER OF SECTION 3, TOWNSHIP 46 SOUTH, RANGE 42 EAST, PALM BEACH COUNTY, FLORIDA



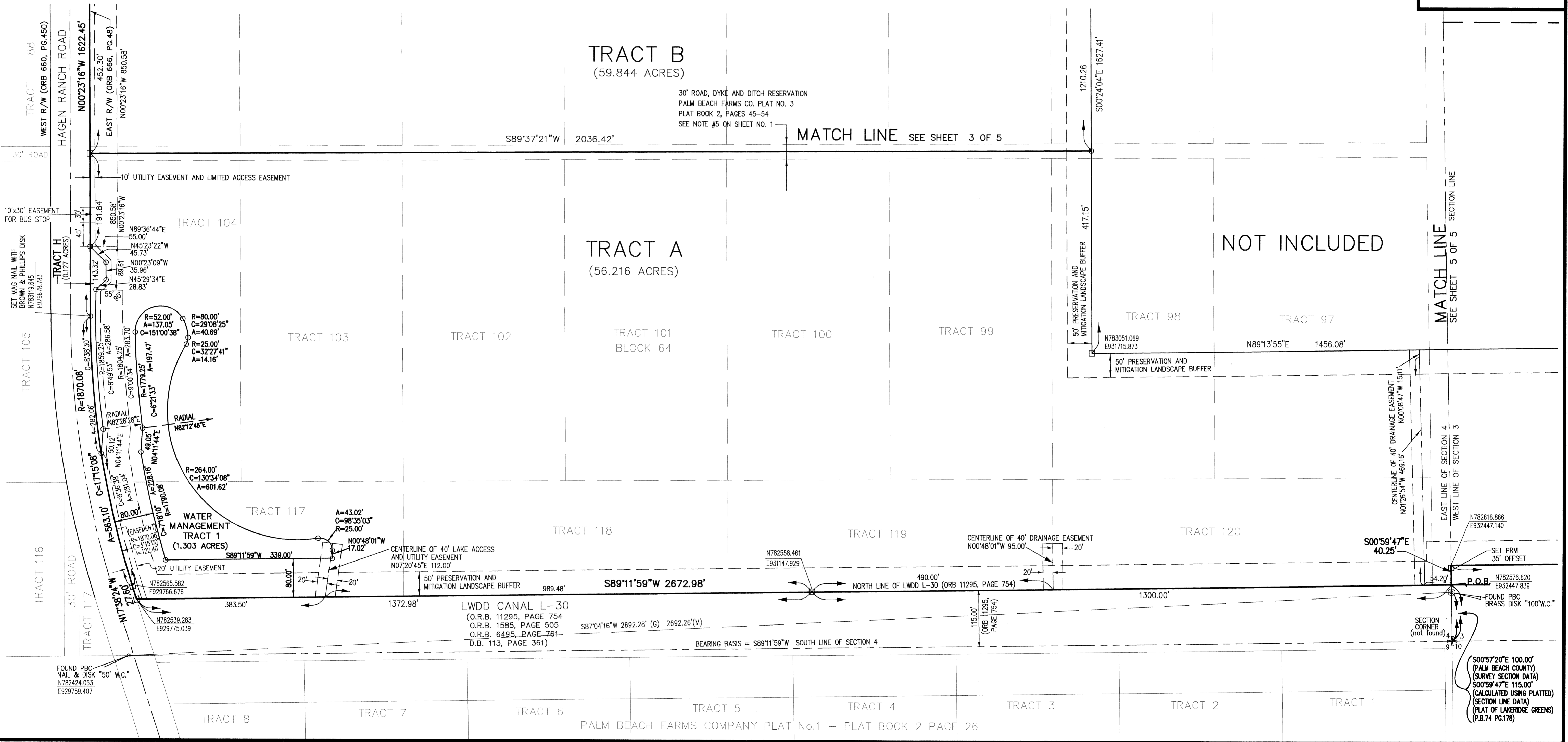
KEY MAP
N.T.S.

MAY 2004

SHEET 2 OF 5



94



SUBDIVISION WINSBERG WETLAND RESTORATION PROJECT
 BOOK 102
 FLOOD ZONE B
 QUAD # 51
 SE 240 - 1300
 FAZ - 464
 PUD NAME

BROWN & PHILLIPS, INC.
 PROFESSIONAL SURVEYING SERVICES
 CERTIFICATE OF AUTHORIZATION # LB 6473
 3969 N. HAVERHILL RD. SUITE 105, WEST PALM BEACH, FLORIDA 33417 561-615-3988, 615-3986 FAX

THIS INSTRUMENT PREPARED BY:
 JOHN E. PHILLIPS, III
 PROFESSIONAL SURVEYOR AND MAPPER
 STATE OF FLORIDA No.4826

WINSBERG WETLAND RESTORATION PROJECT

DRAWN: MDB	PROJ. NO. 04-033P
CHECKED: JEPHII	SCALE: 1"=100'
FIELD BOOK:	DATE: 5/17/04
PAGES:	SHEET 2 OF 5

S00°57'20"E 100.00'
 (PALM BEACH COUNTY)
 (SURVEY SECTION DATA)
 S00°59'47"E 115.00'
 (CALCULATED USING PLATTED)
 (SECTION LINE DATA)
 (PLAT OF LAKERIDGE GREENS)
 (P.B.74 PG.178)